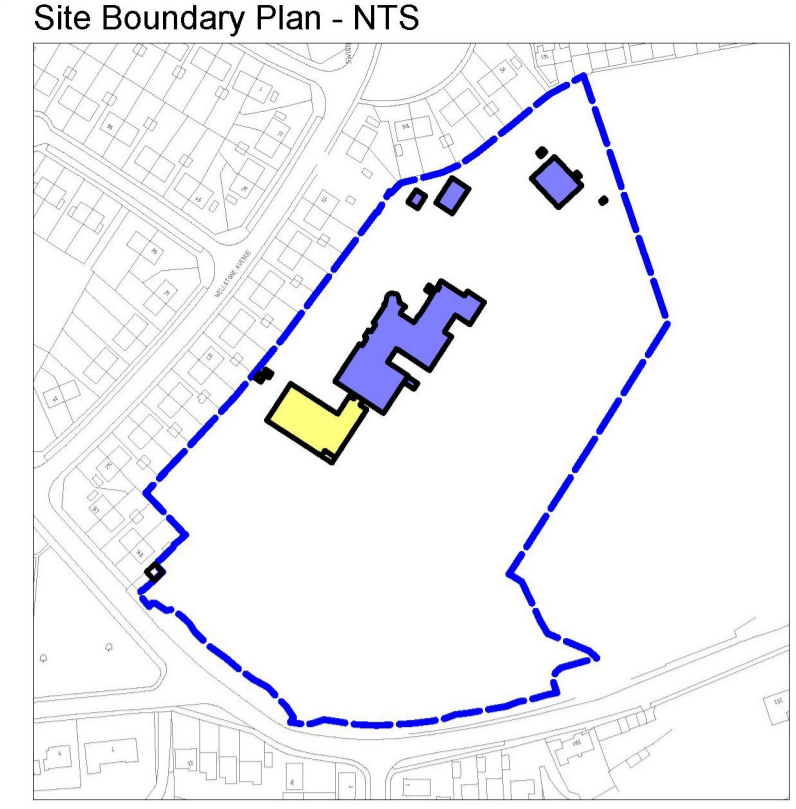
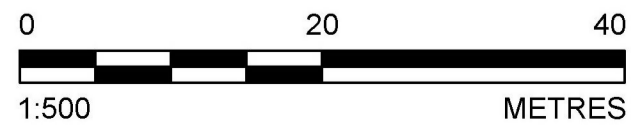


- LEGEND**
- Buildings and Structures**
- Site Ownership Boundary (refer to inset)
 - Retained School Buildings and Structures
 - Proposed School Buildings and Structures
 - Building Removed
 - Principal/ Secondary Building Access and Egress
 - Retained Landscape and Buildings
- Hard Landscape Elements**
- Retained Walls
 - Proposed Concrete Asphalt Vehicular Grade
 - Proposed Concrete Asphalt Pedestrian Grade
 - Proposed Concrete Asphalt Occasional Access Grade
 - Proposed Concrete Block/ Set/ Flag Paving (Including steps and hazard paving)
 - Proposed Crushed Stone Surface
 - Proposed Artificial Grass
 - Proposed Safety Surfacing
 - Proposed Retaining / Sit Walls
- Fencing**
- Retained Fencing/ Handrail/ Balustrade
 - Proposed Boundary Fencing
 - Proposed Internal Fencing/ Handrails/ Balustrade
- Street Furniture**
- Retained Shelter/ Cycle Canopy
 - Retained Site Furniture
 - R = Relocated
 - Proposed Shelter/ Cycle Canopy
 - Proposed Site Furniture (Provision TBC)
- Soft Landscape Elements**
- Retained Tree Canopy (refer to Tree Survey Report)
 - Tree Labels Category A - High Quality and Value
 - Tree Labels Category B - Moderate Quality and Value
 - Tree Labels Category C - Low Quality and Value
 - Tree Labels Category U - Poor Quality and Value
 - Root Protection Area (refer to Tree Survey Report)
 - Tree/ Vegetation Removed
 - Retained Tree (not identified on tree survey)
 - Retained Hedgerow (not identified on tree survey)
 - Retained Vegetation
 - Proposed Tree Planting
 - Proposed Ornamental Hedge Planting
 - Proposed Ornamental Shrub Planting
 - Proposed Native Woodland/ Scrub/ Hedge Planting
 - Proposed Amenity Grass
 - Proposed Species Rich Grass
- Landform**
- Existing Contours (0.5 m intervals)
 - Proposed Contours
 - Proposed Top/ Bottom of Slope
 - Earth Mounding
 - Embankments



- Parking Notes**
- Parking standards taken from Leeds City Council Parking Supplementary Planning Guidance dated January 2016
 - Parking Provision based upon Transport Consultant recommendations stating a total of 48 parking spaces.
 - Visitor numbers advised by LCC Highways during pre-application meeting.
 - Up to 10% of spaces should be electric charging ready (Leeds SPG).
 - Projected staff numbers 48 full time and 16 part time = 56 full time equivalent.
 - Existing parking numbers include double parking in elongated bays.
 - Additional parking spaces above LPA requirements provided to reduce impact of parking upon surrounding highways.

Guidance	Provision
Existing Parking Provision (numbers provided by school)	25 Car Parking Bays
Projected Staff Numbers	48 Full Time 16 Part Time Total 56 FTE
Parking Provision Based on Leeds City Council SPG Parking Bays = 1 space per 1 staff Visitor Bays = 10%	30 Car Parking Bays (Swinnow Lane) 21 Car Parking Bays (Wellstone Avenue) Total = 51
Parking Breakdown Accessible Bays = 2 or 6% (greatest no.) Convertible Bays = 4% Spaces reserved for Car Sharing = 1 in 20 spaces Electric car charging points = 1 point per 10 spaces	3 Accessible & 3 Enlarged 2 Electric Charging 3 Electric Ready 5 Car Share
Motorcycle Bays = 1 bay per 20 staff	4 Motor Cycle Parking Bays
Cycle Provision Based on Leeds City Council SPG Short Stay/ Visitor = 1 space per 100 pupils (cap at 10) Long Stay = 1 space per 10 pupils	40 Secure Pupil Cycle Storage 6 Visitor Parking (3 no. hoops) 4 Secure Staff Cycle Bins
Cycle Provision Based on BREEAM Tra 3 Cyclist Facilities 5 x Number of Classes in Year Group	

- General Notes**
- This drawing is based upon information provided by third parties and as such the accuracy of the content cannot be guaranteed.
 - Do not scale from this drawing. Use figured dimensions only.
- Notes Under CDM Regs 2015**
- The information presented on this drawing has been prepared with regards to the role of the designer.
 - Where possible the design has taken care to eliminate hazards and reduce risk.
 - This drawing is to be read in conjunction with the Health and Safety Plan.

Rev	Description	AM	AJM	Date
P7	Revised GFP; building access points; fire tender access to match fire strategy; steps and ramps adjusted in line with levels changes; spoil mound adjusted	AM	AJM	13/12/16
P6	Revised site boundary; notes adjusted	AJM	AJM	11/11/16
P5	Cycle parking numbers amended	AJM	AJM	07/11/16
P4	Updated in line with design development; revised building access locations; fire tender access; early years access; spoil mounds	AJM	AJM	31/10/16
P3	Updated in line with revised GFP. Steps, ramps and walls refined	AJM	AJM	23/09/16
P2	Updated in line with VE requirements and design development; amended car parking; storage unit removed; walls graded out. Play equipment relocated	AJM	AJM	21/09/16
P1	First issue for information	AJM	AJM	13/09/16

Client Name: **Clugston**

Project Title: **Park Spring Primary School**

Drawing Title: **Landscape Masterplan Whole Site**

Date: 13/09/16
 Author: AJM
 Designer: AJM
 Scale: A1
 Status: PRELIMINARY
 Drawing No: PSP-L-0200
 Revision: P7

1:500 METRES

AJM LANDSCAPE ARCHITECTS LTD
 Monks Hill
 York Road
 Leeds
 LS15 4TA
 T: 0113 493 1446
 E: info@ajmlandscape.co.uk
 W: www.ajmlandscape.co.uk